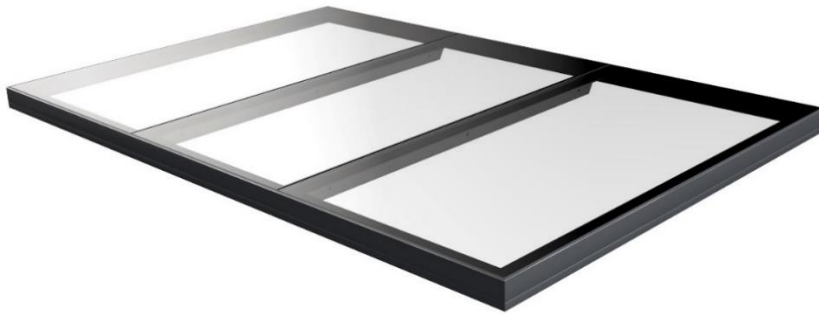


# GLAZING VISION

## Multipart Flushglaze Rooflight

402-TDS-UK-002 – v1.2 – 09 Jul 2020



**Name:** Multipart Flushglaze  
**Type:** Fixed flat modular rooflight

**Description:**

The Multipart Flushglaze is a fixed modular product designed to provide maximum daylight with minimum visible internal structure. This product is available in four different configurations:

Self-Supporting	Back-to-Back	Glass-Fin	Walk-On
A simple weathertight silicone joint is used between the glazed units.	An internal beam formed of two back-to-back angles is used to support the edges of the glazed units at their joints.	A heat-strengthened laminated glass fin is used to support the edges of the glazed units at their joints.	A walk-on product using back-to-back angles to support the edges of the walk-on glazed units at their joints.

A variety of optional extras such as special colour and easy clean coating are available.

This product is robust and long-lasting, boasting excellent thermal performance and air tightness.

**Intended Use:** Fixed rooflight to provide natural daylight and weather resistance. The product is fixed and does not open. Only walk-on units may be walked on.

<b>External Weathered Upstand Dimensions of Standard Flushglaze Unit:</b>	Min Section Span:	400 mm	Max Section Span:	4000 mm
	Min Section Width:	400 mm	Max Section Width:	4000 mm
	Min Section Area:	0.16 m <sup>2</sup>	Max Section Area:	10.00 m <sup>2</sup>
	Min Upstand Pitch:	3°	Max Upstand Pitch:	70°
	<i>Glazing Vision recommends a pitch of at least 5 degrees for standard units.</i>			

<b>External Weathered Upstand Dimensions of Walk-On Flushglaze Unit:</b>	Min Section Span:	400 mm	Max Section Span:	4000 mm
	Min Section Width:	400 mm	Max Section Width:	4000 mm
	Min Section Area:	0.16 m <sup>2</sup>	Max Section Area:	10.00 m <sup>2</sup>
	Min Upstand Pitch:	1°	Max Upstand Pitch:	70°
	<i>Glazing Vision recommends a pitch of 1° for walk-on units.</i>			

Note that the minimum and maximum span, width and pitch are dependent on various factors, your technical sales advisor will be happy to advise on these. Further information on upstand requirements and product dimensions can be found on our website or by contacting your technical sales advisor.

**Glazing:** A wide variety of glazing specifications are available for this product. Your technical sales advisor will be happy to answer any questions regarding specific glass specifications or glazing performance requirements. Otherwise, quotes include suitable and cost effective glazing proposals.

Unless otherwise stated, the default loadings used for specifying walk-on glass will be a distributed load of 1.50 kN/m<sup>2</sup> and a concentrated load of 2.00 kN per a 50 mm x 50 mm square area (standard domestic loadings). A variety of anti-slip finishes are available for walk-on glass.

### Standard Colours:

Qualicoat approved RAL 7015 slate grey outer, where inner framework is visible (back-to-back and walk-on units), this is also RAL 7015 as standard.

### Performance and Weathertightness:

The aluminium frame of the product employs a dual hardness EPDM insulating gasket to thermally isolate the frame from the interior of the building. Structural integrity is assured through the use of finite element analysis (FEA) and testing.

U-values are calculated for each product and will be supplied in our quote. Further information and specific performance details can be obtained from your technical sales advisor.

The product is sealed to the upstand using silicone and fixed in place with structural fixings which are either concealed by a clip-on cover or with lead (or other material) flashing (wall abutted units) leaving a sleek external finish.

The standard Flushglaze unit has been thoroughly tested and achieved the following classification results:

Size: 2000 mm span x 2500 mm width Pitch: 0°

Test	Standard	Classification/Declared Value
Air permeability	BS EN 12207	Class 4 ±600 Pa
Watertightness	BS EN 12208	Class 9A 600 Pa

### Security and Certification:

This product is designed with security as a priority. This product is tested to LPS2081 Issue 1:2015. It is approved by the Loss Prevention Certification Board (Cert/LPCB ref: 1347a) and Secured by Design:

#### Secure (Security Rating A)

The inner pane must be at least 8.8 mm PVB laminated glass (two 4 mm thick panes separated by an 0.8 mm thick PVB interlayer).

#### Secure+ (Security Rating B)

The inner pane must be at least 9.5 mm ionomer laminated glass (two 4 mm thick panes separated by a 1.5 mm thick ionomer interlayer).

This product has been independently performance tested by the British Board of Agrément (certificate number 12/4895). To achieve certification, it underwent a rigorous testing regime that included weathertightness, security, thermal performance, structural integrity and durability of paints and sealants.

### Optional Extras:

The following optional extras are available for this standard product at additional cost:

#### Easy Clean Coating:

A coating applied to the external face of the glass that facilitates water run-off. Helps the glass stay cleaner for longer and makes cleaning easier.

#### Special Colour(s):

Self-supporting and glass-fin units have a single colour as standard. This can be swapped for a special colour. Back-to-back and walk-on units have separate inner and outer colours as standard. Each can be swapped for a special colour.

#### Upstand Top Trim:

Cover designed to mask the top of upstands which may be visible through glass when viewed from above. Includes detail to recess standard plasterboard.

#### Wall Abutments:

The product can be fixed and weathered to a wall rather than an upstand on up to three sides.

#### EPDM:

A flexible membrane to provide additional waterproofing between the upstand and the product. This option is only available for the Walk-On Multipart Flushglaze.

A suite of sales drawings is available.

Bespoke options may be available upon request but may incur additional design fees – contact your technical sales advisor for more information.

---

**GLAZINGVISION**



[www.glazingvision.co.uk](http://www.glazingvision.co.uk)



+44 (0)1379 658300



[technicalsales@glazingvision.co.uk](mailto:technicalsales@glazingvision.co.uk)