

Technical Data Sheet
**GLAZING
 VISION**

Chain Actuated Pitchvent

PV-CHAIN-TDS-v1.1-30.11.18

Name: GV Standard Chain Actuated Pitchvent

Code: 202

Type: Opening roof window for ventilation

Description: A chain actuated opening roof-window comprising thermally broken polyester powder-coated aluminium sections and a double or triple glazed unit. Designed to be installed between 15° and 60° from horizontal.

Features:

Pitchvent roof-windows are designed to provide maximum daylight with minimal visible internal structure.

The product is fixed into the roof structure from the inside. Once installed, internal finishes should then be built up to conceal these fixings.

Base and lid manufactured using thermally broken aluminium extrusions featuring polyamide breaks.

Technical product catalogue of data including; sales drawings, schedule and manufacturing information.

Internal Viewable Double Glazed:	Min Span	800mm	Max Span	3000mm
	Min Width	800mm	Max Width	3000mm
	Min Pitch	15°	Max Pitch	60°

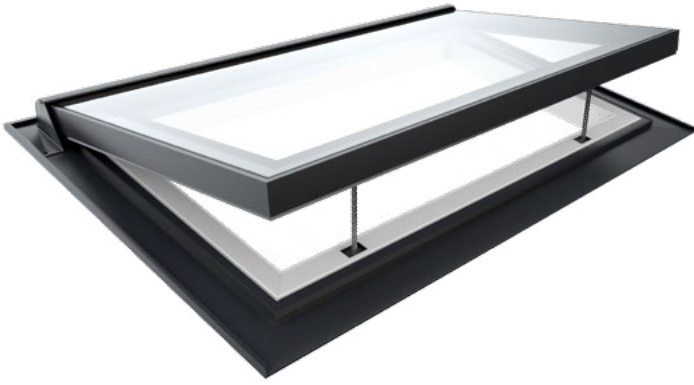
Internal Viewable: Triple Glazed:	Min Span	800mm	Max Span	3000mm
	Min Width	800mm	Max Width	3000mm
	Min Pitch	15°	Max Pitch	60°

Maximum Internal Viewable Span and Internal Viewable Width are determined by the opposing dimension, glass specification and pitch - check with manufacturer prior to specification that your dimensions are acceptable.

Further information on critical dimensions is available on Glazing Vision standard drawings.

U-values: Example toughened glass with nominal 1000mm Internal Viewable Span x 3000mm Internal Viewable Width:

Double glazed	Triple glazed
U _g = 1.1 W/(m ² K)	U _g = 0.6 W/(m ² K)
U _w = 2.2 W/(m ² K)	U _w = 1.6 W/(m ² K)
U _d = 1.5 W/(m ² K)	U _d = 1.1 W/(m ² K)

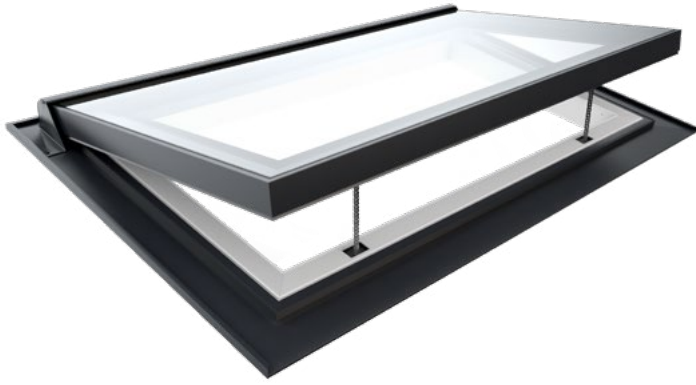


Technical Data Sheet
**GLAZING
VISION**

Chain Actuated Pitchvent

PV-CHAIN-TDS-v1.1-30.11.18

Example Glass Specification:	Double glazed Outer: 6mm HST Clear toughened Spacer: 20mm Black warm edge silicone-sealed argon-filled cavity Inner: 6mm HST Clear soft low E toughened Double glazed (laminated) Outer: 6mm HST Clear toughened Spacer: 16mm Black warm edge silicone-sealed argon-filled cavity Inner: 9.5mm Clear soft low E heat strengthened laminated Triple glazed Outer: 6mm HST Clear toughened Spacer: 16mm Black warm edge silicone-sealed argon-filled cavity Centre: 6mm HST Clear soft low E toughened Spacer: 16mm Black warm edge silicone-sealed argon-filled cavity Inner: 6mm HST Clear soft low E toughened Triple glazed (laminated) Outer: 6mm HST Clear toughened Spacer: 14mm Black warm edge silicone-sealed argon-filled cavity Centre: 6mm HST Clear soft low E toughened Spacer: 14mm Black warm edge silicone-sealed argon-filled cavity Inner: 9.5mm Clear soft low E heat strengthened laminated
Standard Colour:	Qualicoat approved RAL 7015 slate grey external framework, RAL9010 pure white internal framework.
Rooflight Control:	Intelligent wall switch as standard. Optional controls available.
Power Supply:	Internally mounted power supply input 230v, output 24v DC 300W
Drive Mechanism:	One or two* motor-driven chain actuators. *depending on product specification
Thermally Broken:	39mm Polyamide thermal breaks and concealed closed-cell PIR insulation.
Seals:	Combination of silicone and blade seals.
Security:	Sealed to the roof using silicone and polybutyl, mechanically fixed from the inside with woodscrews and lapped under the surrounding tiling. The chain actuator is fixed into the base frame which is completely enclosed whilst the product is closed. Access to the manual override mechanisms is from the inside.
Use for Access:	No



Technical Data Sheet
**GLAZING
 VISION**

Chain Actuated Pitchvent

PV-CHAIN-TDS-v1.1-30.11.18

CAD Drawings:	Drawing Number	Description
	202-ASS-001	General dimensions (including positions of fixings)
	202-ASS-002	Standard installation
	202-ASS-003	Sunken installation
	202-ASS-004	Raised installation
	202-ASS-005	Section views
	202-ASS-006	Chain actuated Pitchvent general arrangement details
	202-ASS-008	Rain sensor positioning
	202-ASS-009	Client wiring diagram

Optional Extras:	Remote Control:	Yes	Easy Clean Coating:	Yes
	Rain Sensor:	Yes	Dual Colour:	Yes
	Solenoid Bolt:	No	Thermostat:	No
	BMS Integration:	No	Downlighter:	No
	Trickle Vents:	No	Multi-Part:	No
	Wall Abutted:	No	Special Colour:	Yes
	Battery Back-up:	Yes		



EN 14351-1:2006+A2:2016

Test	Standard	Classification / Declared Value
Air Permeability	BS EN 12207	Class 4 / 600 pascals
Watertightness	BS EN 12208	9A / 600 pascals
Wind Resistance	BS EN 12210	Class 4C / 1600 pascals

GLAZINGVISION

Glazing Vision Ltd
 Sawmills Road, Diss IP22 4RG

Technical

📞 01379 658300

Email

✉️ technicalsales@glazingvision.co.uk