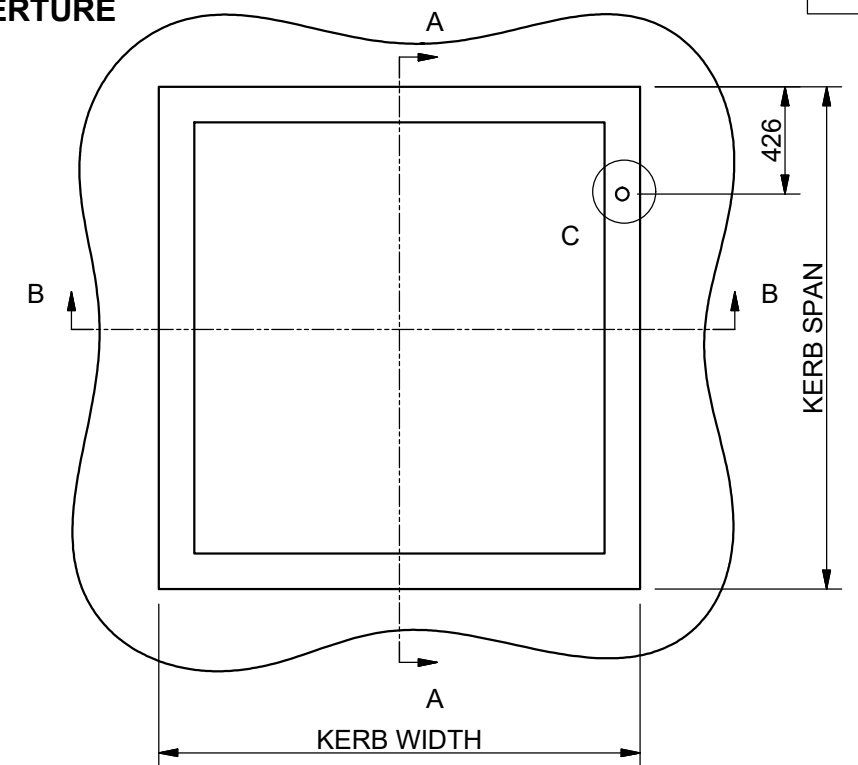
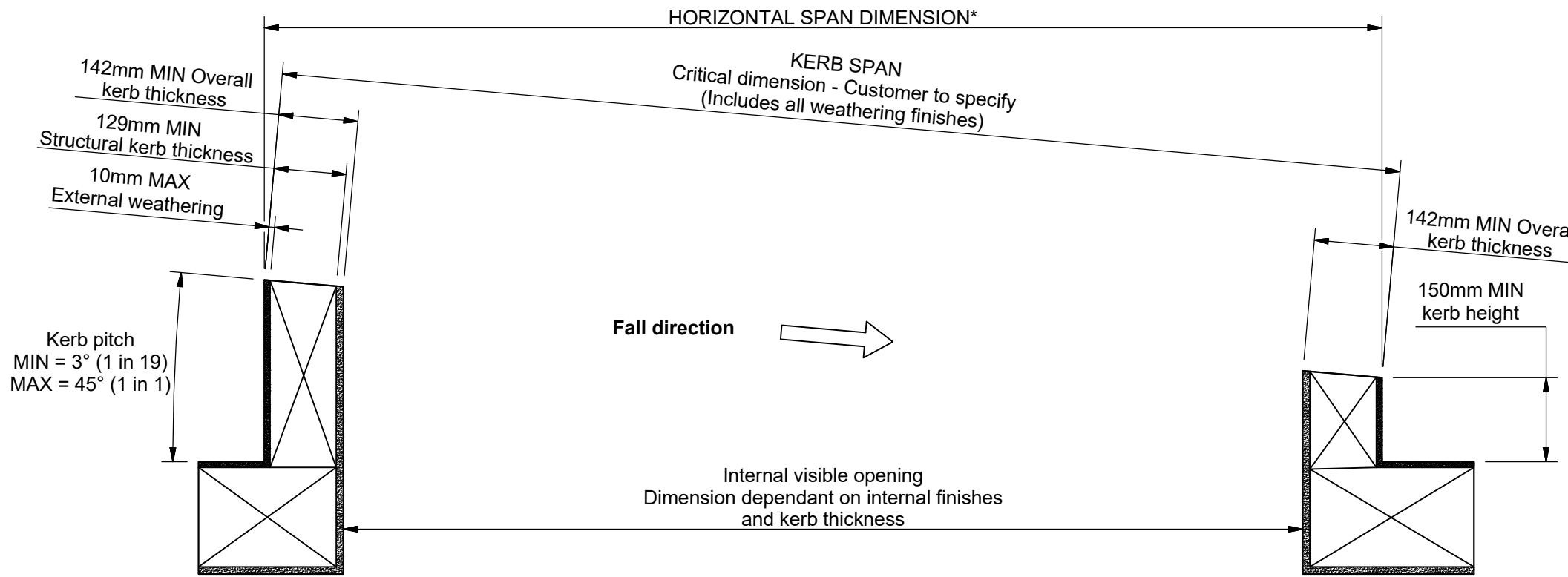
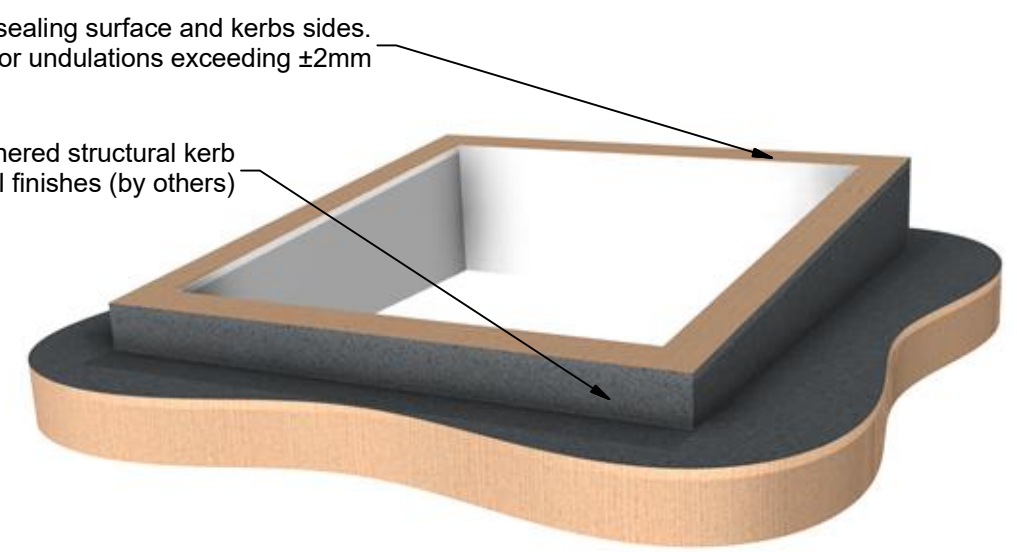
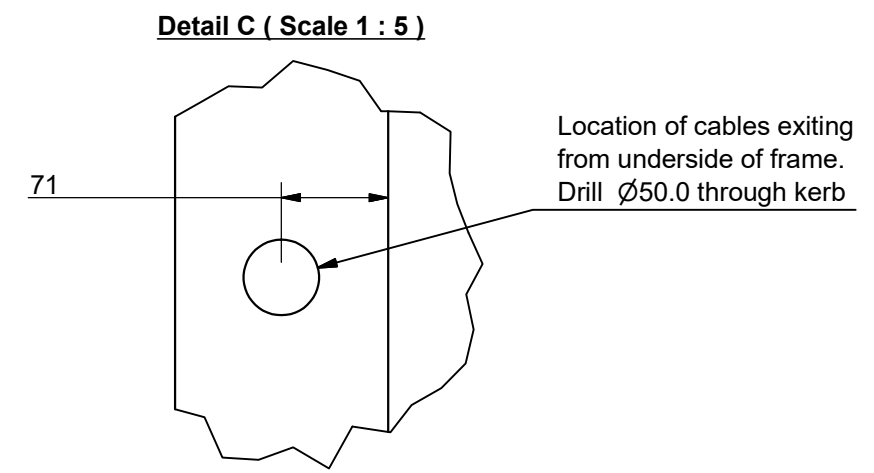
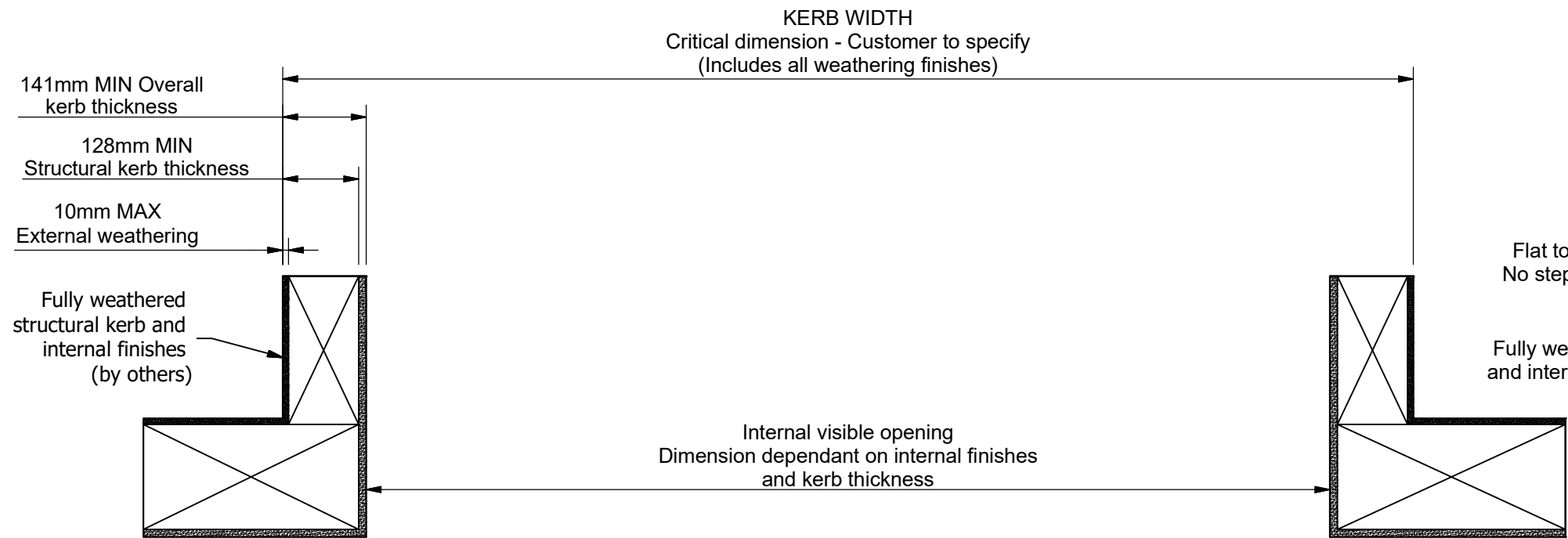


**NOTE: KERB SHOWN IS FOR RHS APERTURE.
MIRROR FOR LHS APERTURE**

Section A-A (Scale 1 : 10)
View along fall



Section B-B (Scale 1 : 10)
View across fall



*Dimension calculated as:
SPAN x COSINE(PITCH°)
e.g. 2000cos(3) = 1997mm

GLAZING VISION

Saw Mills Road
Diss
Norfolk
IP22 4RG

Tel: +44 (0)333 8000 881
Fax: +44 (0)333 8000 882
Email: sales@glazingvision.co.uk
Website: www.glazingvision.co.uk

IT IS GLAZING VISION'S POLICY TO CONTINUOUSLY DEVELOP AND IMPROVE OUR PRODUCTS. WE THEREFORE RESERVE THE RIGHT TO MODIFY OR CHANGE THE DETAIL DESIGN AT OUR DISCRETION AND WITHOUT PRIOR NOTICE. THIS DRAWING IS COPYRIGHT AND THE SOLE PROPERTY OF GLAZING VISION LTD. THE DESIGNS/INFORMATION IT CONTAINS ARE PRIVATE AND CONFIDENTIAL. IT MUST NOT BE COPIED, EXHIBITED OR COMMUNICATED TO THIRD PARTIES FOR ANY PURPOSE OTHER THAN THAT FOR WHICH IT WAS ISSUED WITHOUT THE WRITTEN PERMISSION OF GLAZING VISION LTD.

Third angle projection unless otherwise noted.
Tolerances:
Whole numbers = ±1mm
One decimal place = ±0.5mm
Two decimal places = ±0.2mm
All angles 90±0.5 degrees unless specified
IF IN DOUBT - ASK! DO NOT SCALE
Supplier to deburr & remove sharp corners

Rev	Revision Description	Drawn/Date
B	Max pitch changed from 10 degrees to 45 degrees	HL 16.01.18
C	Kerb thickness dims amended	SW 26.10.18

Product: 603 - GV Standard Sliding over fixed	Checked By: JSL
Description: Kerb details	Check Date: 26.10.18
Materials: N/A	Drawn By: PGW
Finish: N/A	Drawn Date: 25.02.2014
Weight: N/A	Quantity: N/A
Scale: 1:10	Drawing No: 603-ASS-402