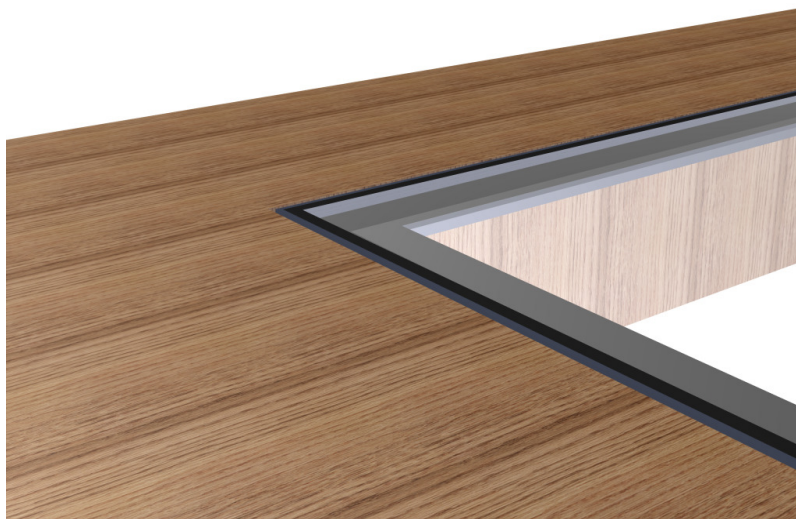


## Product Data Sheet Flushglaze Internal Walk-On



<b>Name:</b>	Flushglaze (Internal Walk-On)
<b>Code:</b>	402
<b>Type:</b>	Fixed rooflight for suitable for walking on. Only suitable for internal applications.
<b>Description:</b>	<p>A fixed glazing system comprising polyester powder coated aluminium framework and walk-on glass unit. Designed to be installed for internal use only. Available in single part format.</p> <p>Flushglaze rooflights are designed to provide maximum daylight with minimal visible internal structure.</p>
<b>Features:</b>	<p>Design ensures no visible fixings once flooring is installed.</p> <p>Technical product catalogue of data including; sales drawings, schedule and manufacturing information.</p> <p>Minimal framework exposed. Top = 3.2mm thick, Underside = 6.5mm thick.</p>
<b>Standard Glass Specification:</b>	<p>25.5mm Clear Heat Soak Tested Toughened Laminate.</p> <p>Design loadings for standard glass specification: Uniform load = 1.5kN/m<sup>2</sup> Concentrated load = 2.0kN</p> <p>Properties for standard glass specification: Centre pane U-value = 5.1W/m<sup>2</sup>K Light Transmittance = 85.1% Light Reflectance = 8.3%</p> <p>Shading Coefficient = 0.79 Mass = 67 Kg/m<sup>2</sup> Est. Sound Reduction Index = 38dB</p>
<b>Standard Colour:</b>	RAL 7015 Grey
<b>Roolight Control:</b>	N/A



<b>Power Supply:</b>	N/A						
<b>Drive Mechanism:</b>	N/A						
<b>Thermally Broken:</b>	No						
<b>Thermal Performance (U-Value):</b>	Not available yet						
<b>Seals:</b>	Combination of structural glazing tape, polyurethane adhesive and silicone.						
<b>Security:</b>	Secured to internal floor with structural fixings.						
<b>Kerb Dimensions:</b>	<table> <tr> <td>Min Span = 400mm</td> <td>Max Span = 4000mm</td> </tr> <tr> <td>Min Width = 400mm</td> <td>Max Width = 4000mm</td> </tr> <tr> <td></td> <td>Max Kerb Area = 3.0m<sup>2</sup></td> </tr> </table>	Min Span = 400mm	Max Span = 4000mm	Min Width = 400mm	Max Width = 4000mm		Max Kerb Area = 3.0m <sup>2</sup>
Min Span = 400mm	Max Span = 4000mm						
Min Width = 400mm	Max Width = 4000mm						
	Max Kerb Area = 3.0m <sup>2</sup>						

**NOTE:** MAXIMUM SPAN/WIDTH VARIES DEPENDANT ON THE OTHER. ALWAYS USE THE SCHEDULE TO CONFIRM SIZES.

<b>Use for Access:</b>	N/A				
<b>Sales Drawings:</b>	<table> <thead> <tr> <th><u>Drawing Number</u></th> <th><u>Description</u></th> </tr> </thead> <tbody> <tr> <td>402-ASS-050</td> <td>Internal Walk-on Flushglaze</td> </tr> </tbody> </table>	<u>Drawing Number</u>	<u>Description</u>	402-ASS-050	Internal Walk-on Flushglaze
<u>Drawing Number</u>	<u>Description</u>				
402-ASS-050	Internal Walk-on Flushglaze				

### Optional Extras

<b>Remote Control:</b>	N/A	<b>Rain Sensor Overrides:</b>	
<b>Rain Sensor:</b>	N/A	Internal mounted Isolator Switch:	N/A
		Frame mounted Push Button:	N/A
		External mounted Key Switch:	N/A
		External mounted Digital Keypad:	N/A
<b>Solenoid Bolt:</b>	N/A	<b>Dual Colour:</b>	N/A
<b>Thermostat:</b>	N/A	<b>Special Colour:</b>	YES
<b>BMS Integration:</b>	N/A	<b>Ritec Coating:</b>	N/A
<b>Trickle Vents:</b>	NO (Bespoke)	<b>Downlighter:</b>	N/A
<b>Wall Abutted:</b>	NO (Bespoke)	<b>Multi-Part</b>	NO (Bespoke)
<b>Round:</b>	NO (Bespoke)	<b>Multi-Part with Glass Fins</b>	NO (Bespoke)

