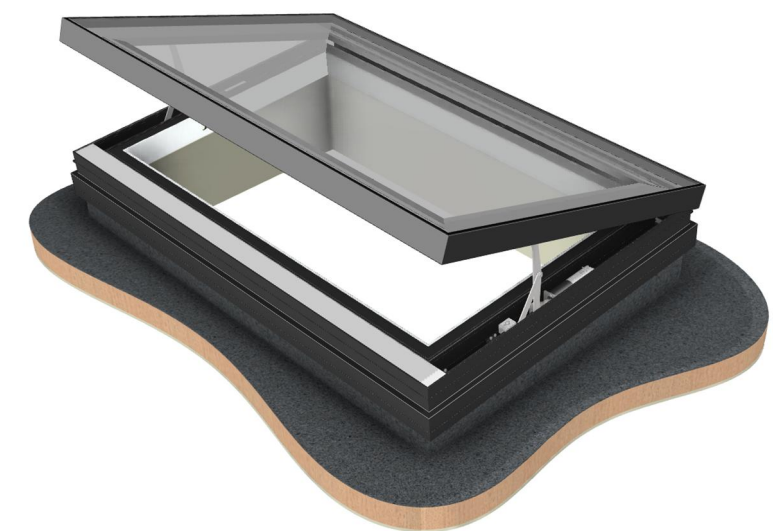
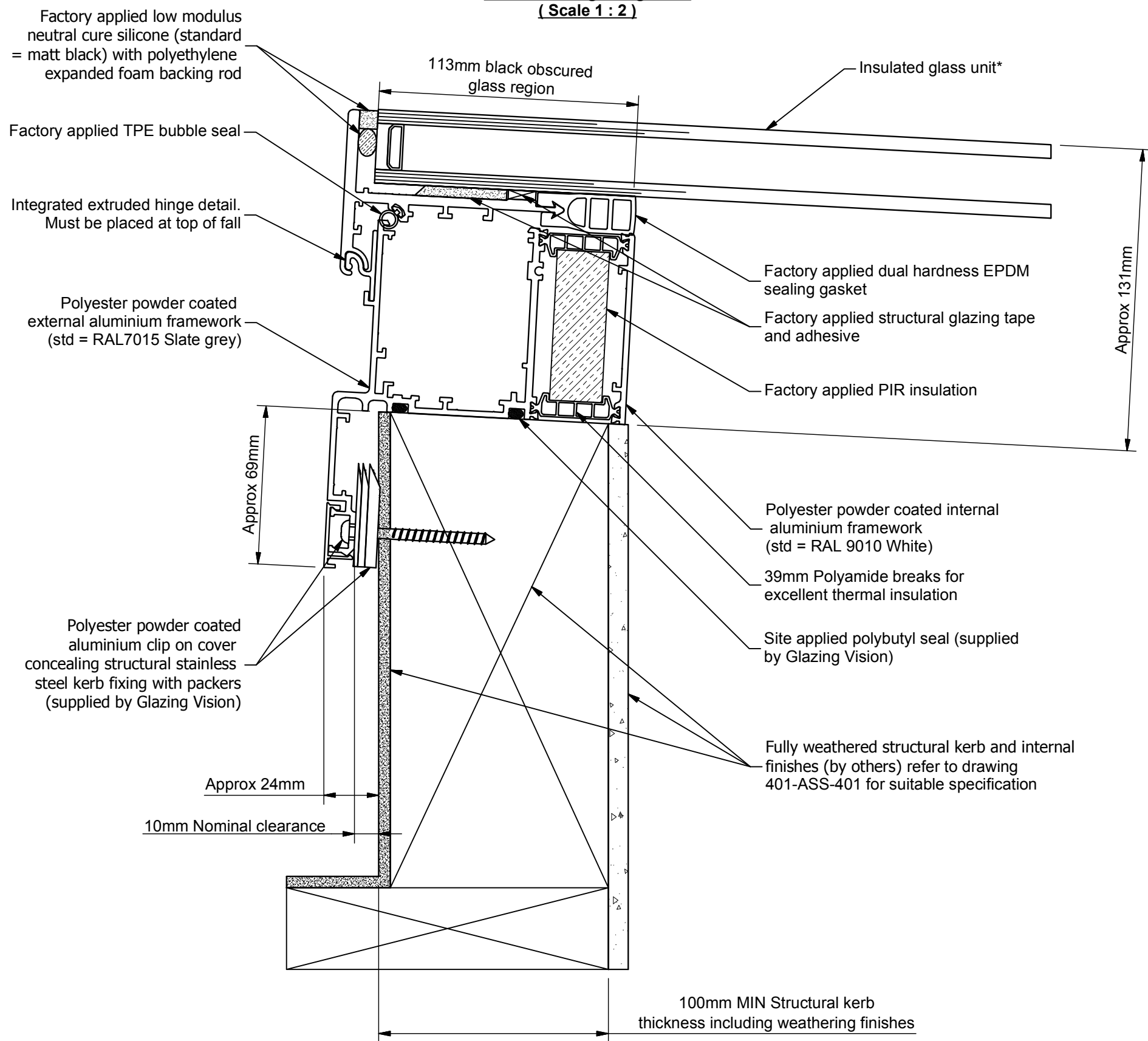


**Section through hinge side  
(Scale 1 : 2)**



- Synchronised electro-mechanical opening mechanisms offering clear front opening
- Intelligent controls allow vent to be stopped in any position
- Optional items such as rain sensor and remote controls add additional functionality
- VisionVents can be specified to integrate with your building management system (BMS)
- VisionVents are available in many variants including integrated and manual versions
- Optional finishes can be specified from the full RAL colour range
- Low voltage power supply as standard with the option of battery backed operation

\*Specification dependant on client options and glazing area  
Design patented: GB2514119

<p><b>GLAZING VISION</b></p> <p>Saw Mills Road Diss Norfolk IP22 4RG</p> <p>Tel: +44 (0)333 8000 881 Fax: +44 (0)333 8000 882 Email: sales@glazingvision.co.uk Website: www.glazingvision.co.uk</p>	<p>IT IS GLAZING VISION'S POLICY TO CONTINUOUSLY DEVELOP AND IMPROVE OUR PRODUCTS. WE THEREFORE RESERVE THE RIGHT TO MODIFY OR CHANGE THE DETAIL DESIGN AT OUR DISCRETION AND WITHOUT PRIOR NOTICE. THIS DRAWING IS COPYRIGHT AND THE SOLE PROPERTY OF GLAZING VISION LTD. THE DESIGNS/INFORMATION IT CONTAINS ARE PRIVATE AND CONFIDENTIAL. IT MUST NOT BE COPIED, EXHIBITED OR COMMUNICATED TO THIRD PARTIES FOR ANY PURPOSE OTHER THAN THAT FOR WHICH IT WAS ISSUED WITHOUT THE WRITTEN PERMISSION OF GLAZING VISION LTD.</p>	<p>Third angle projection unless otherwise noted. Tolerances: Whole numbers = ±1mm One decimal place = ±0.5mm Two decimal places = ±0.2mm All angles 90±0.5 degrees unless specified <b>IF IN DOUBT - ASK! DO NOT SCALE</b> <b>Supplier to deburr &amp; remove sharp corners</b></p>	Rev	Revision Description	Drawn/Date	Product: 401 - GV Standard VisionVent	Checked By:
			-	Initial release	JamesB 20.05.14	Description: Solo electric vent only	JWL
			A	Patent no. added	JSL 10.10.16	Materials: N/A Finish: Std=RAL7015 / RAL9010 Weight: N/A Quantity: N/A Scale: As above	Check Date: 10.10.16
						Drawn By: JamesB Drawn Date: 20.05.14 Drawing No: 401-ASS-418	